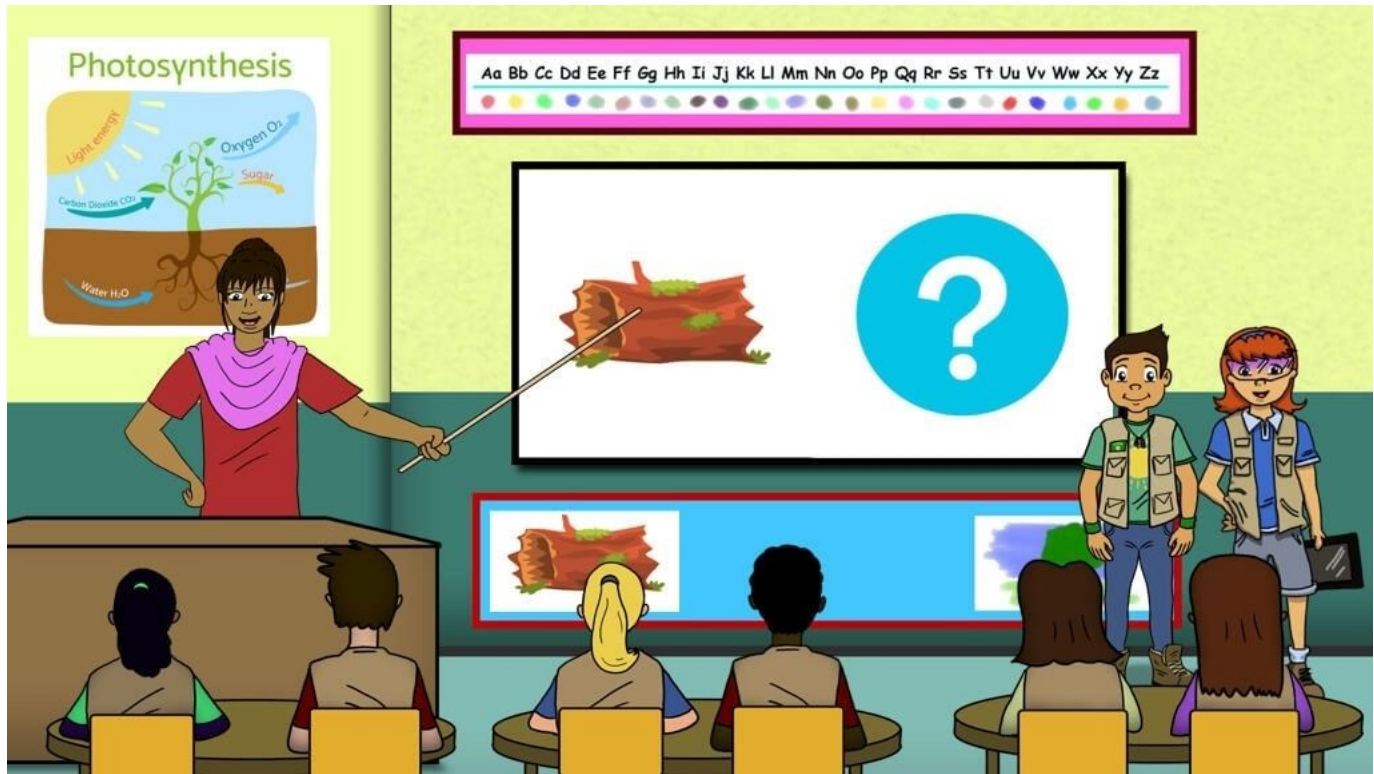


Logs In a Forest

STAGE 3

Written by Kelly Case
Illustrations by George Carrara

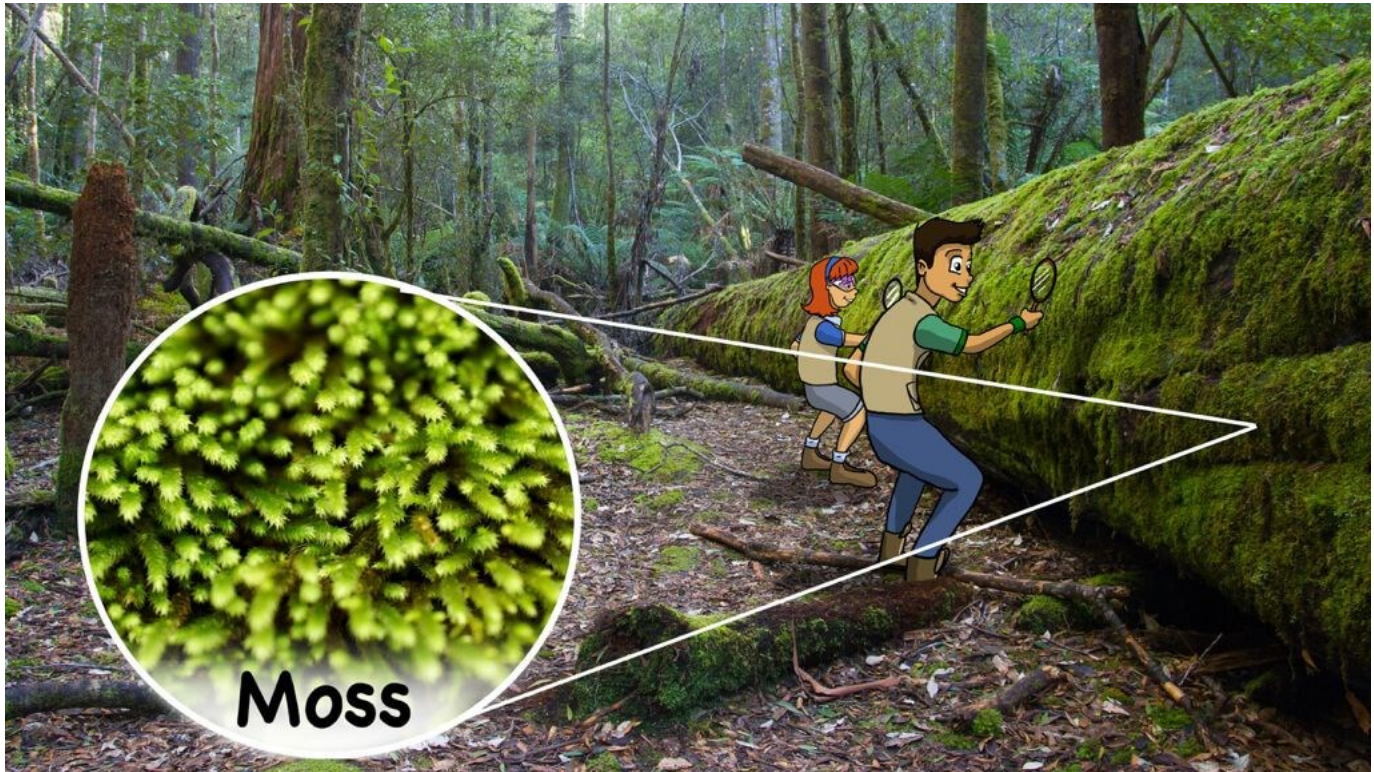
Logs in a Forest



Peg and Tim are in class. Ms. Lee asks, “What happens to logs in the forest?”



Peg and Tim cross the rapids.



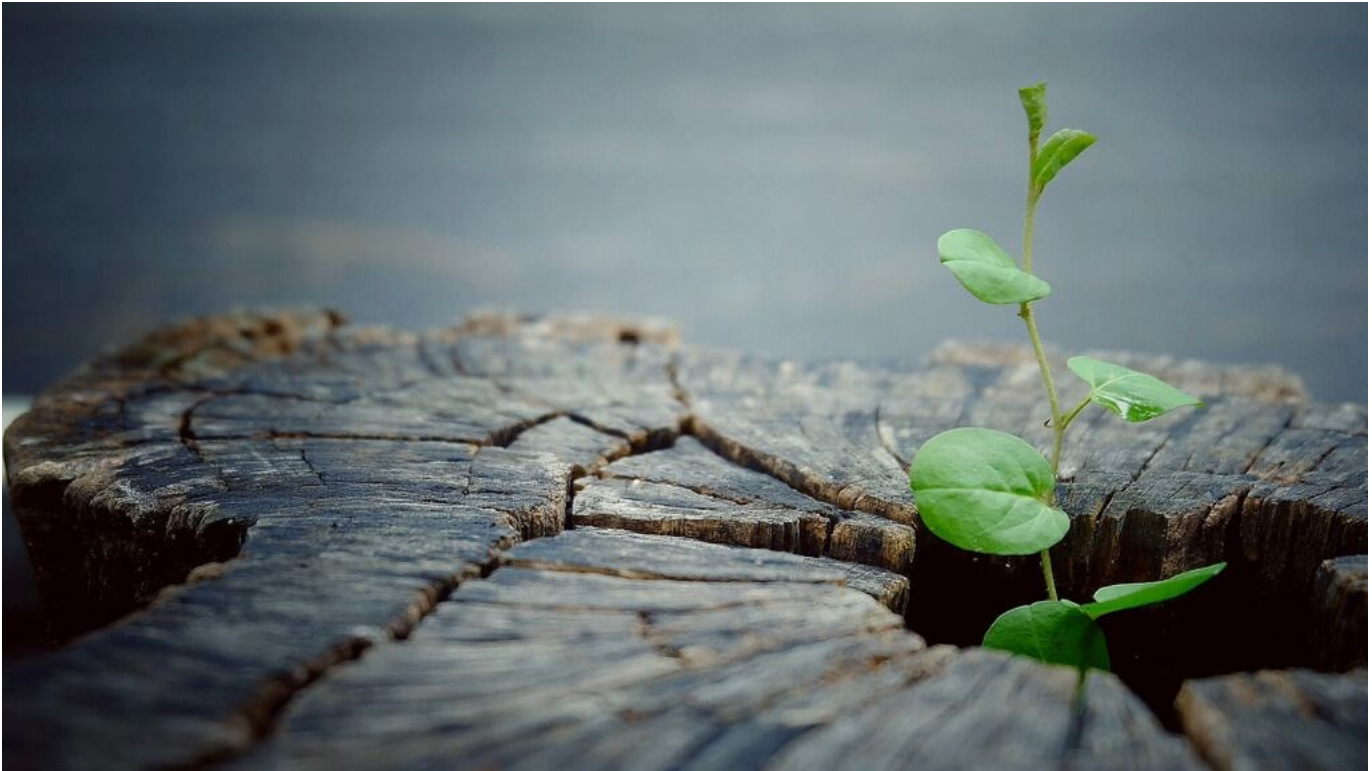
They see moss grow on a log.



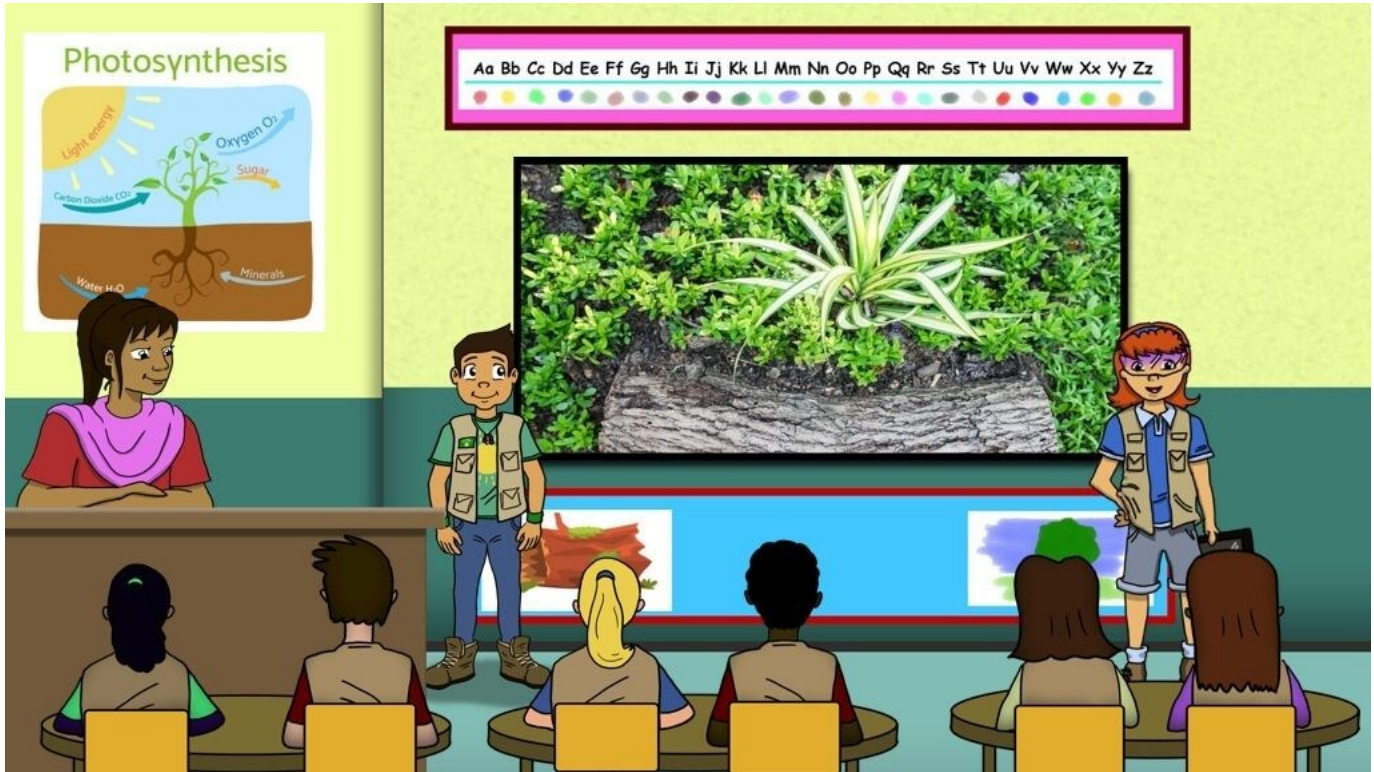
They see fungus grow on a log.



The moss and fungus make the log soft.



New plants can grow on the soft log.



The new plants grow big and tall on the log.

Forest Facts

- Forests cover 30% of the earth's land.
- More than 25% of the medicines we use come from plants found in rainforests.
- Forests provide us with clean air (oxygen) to breathe.





Life Cycle of Trees

Rainforests



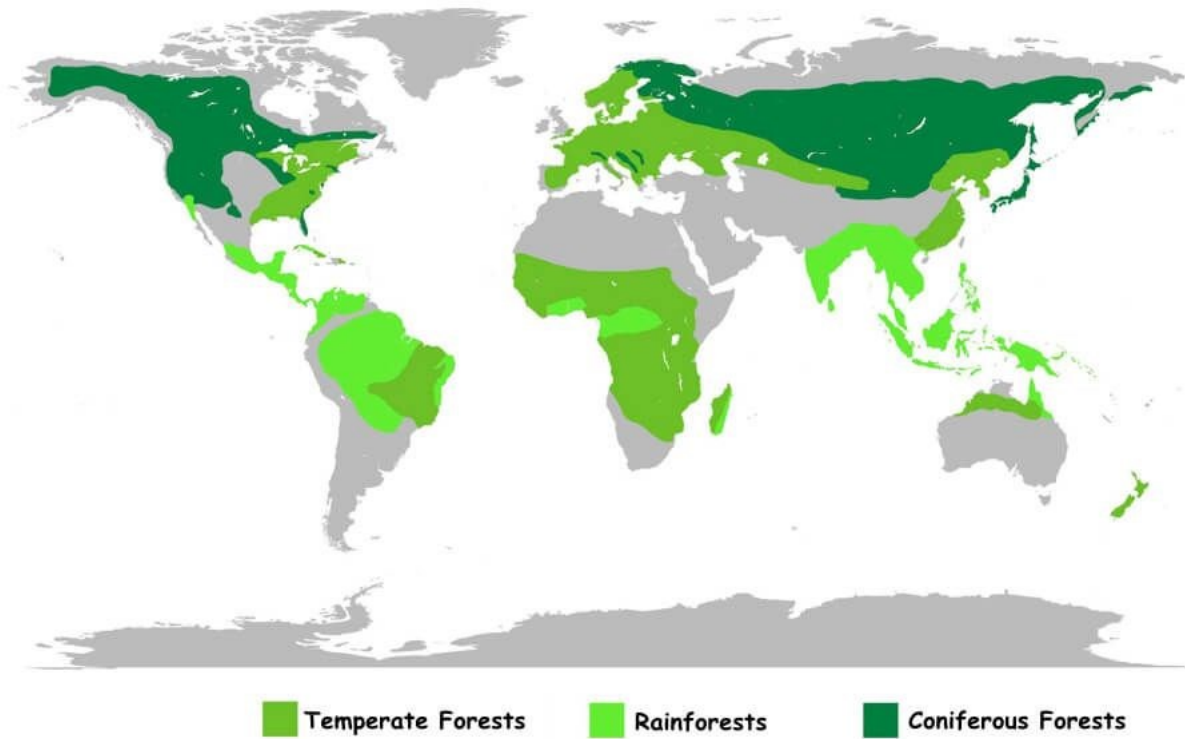
Temperate Forests



Coniferous Forests



Types of Forests



Map of Forests



Some rights reserved. This book is Creative Commons BY-SA 4.0 licensed. You may copy, modify, distribute, or perform the work, even for commercial purposes, without asking permission. For full terms of use and attribution, see <https://creativecommons.org/licenses/by-sa/4.0/>

NEST-USA, Inc © 2017 distributed under the CC BY-NC 4.0 license.